



GLASS SYSTEMS

FOR PUBLIC AND PRIVATE APPLICATIONS IN ASIA



SL 70e / CLIVEDEN AT GRANGE, SINGAPORE



CONTENTS

| | |
|--------------------|----|
| ABOUT SOLARLUX | 04 |
| CERO BY SOLARLUX | 08 |
| BI-FOLDING DOORS | 18 |
| REFERENCE PROJECTS | 36 |



PAST AND
FUTURE -
WE RESPECT
both

ABOUT SOLARLUX



SOLARLUX CAMPUS / MELLE, GERMANY

SOLARLUX - MORE THAN 35 YEARS OF EXPERIENCE

Down-to-earth, innovative and passionate

For more than 35 years, Solarlux has represented exceptional quality in the production of bi-folding doors, facade solutions and glazed extensions. Founded by Herbert Holtgreife, the German company is now managed by his son, Stefan. Around the world, about 850 passionate staff bursting with ideas form the daily backbone for the family-owned company's success. Architects, home owners, contractors, private customers and developers alike all come to Solarlux for top-quality service and technical perfection in their glazing products.

MADE IN GERMANY

International certificates and design awards

All of our products are made in our own production halls on the Solarlux Campus in Melle, near the north-west German town of Osnabrueck. Every single system is made up entirely of high-quality aluminium or wood/aluminium profiles. We subject ourselves to continuous examination by independent institutions to guarantee that top-class, "Made in Germany" quality for our processes and materials. Using maximum precision and careful production processes, we produce top-of-the-range products that meet the highest quality standards. This exacting approach to quality and design is reflected in the certifications we have received from renowned test institutes and the important design awards we have won, such as the red dot and iF awards.

EMBODYING OUR CORPORATE
CULTURE: THE SOLARLUX CAMPUS
WOWS WITH ITS OPEN ARCHITECTURE





HIGH-QUALITY MATERIALS

*Aluminium for durability
and low maintenance*

All of the materials used to make Solarlux systems are durable and of the highest quality. We apply environmental awareness to our aluminium production - Solarlux is certified in accordance with the German A.U.F. Recycling Loop, which has confirmed that our aluminium is recycled in an environmentally conscious manner that saves on resources.



THE SOLARLUX WORLD OF COLOURS

*Anything is possible –
all you have to do is ask!*

With 30 standard RAL colours available in the Solarlux pallet, you can give any Solarlux system an individual touch - and of course, we also offer special colours, ELOXAL, DB, and special surface finishes such as fine-texture on request. Solarlux's standard colour options offer all the colours of the rainbow in matt and gloss finishes at no extra cost, so every system can be designed to match the overall project colour scheme. We use our own in-house clean-room coating process - one of the most modern in Europe - for top surface quality.



30 STANDARD RAL COLOURS

| | | | | | | | |
|--|----------|--|----------|---|----------|---|----------|
|  | RAL 1015 |  | RAL 3011 |  | RAL 5003 |  | RAL 5008 |
|  | RAL 5014 |  | RAL 6005 |  | RAL 6009 |  | RAL 7004 |
|  | RAL 7006 |  | RAL 7015 |  | RAL 7016 |  | RAL 7021 |
|  | RAL 7024 |  | RAL 7035 |  | RAL 7038 |  | RAL 7039 |
|  | RAL 7040 |  | RAL 8017 |  | RAL 8019 |  | RAL 8022 |
|  | RAL 8077 |  | RAL 9001 |  | RAL 9003 |  | RAL 9004 |
|  | RAL 9005 |  | RAL 9006 |  | RAL 9007 |  | RAL 9010 |
|  | RAL 9011 |  | RAL 9016 | | | | |

COATINGS MADE
IN-HOUSE TO CATER TO
ALMOST ANY REQUEST





CERO II / DEN HAAG, NETHERLANDS

THE SLIDING WINDOW FOR MAXIMUM *transparency*

CERO BY SOLARLUX

cero

CERO - THE SLIDING WINDOW

Floor-to-ceiling glazing, 34 mm sight line

Understated profiles, flexible system design, glass areas of up to 15 m²: the exclusive cero sliding window opens up rooms to give them an impressive new dimension. cero offers every option required for architecturally demanding buildings from a constructive and creative point of view. Its slender frames and profiles help to make the elements transparent. The sight lines are kept

to just 34 mm, resulting in a minimalist design that is underlined by its 98 % glass composition. cero is characterised by great aspirations when it comes to design – a fact confirmed by the prestigious design prizes it has been awarded: the iconic “Best of the Best” award in the “Façades” category and the iF Gold Award in the “Building Technology” category.



The benefits of cero at a glance

WIND LOADS

The cero has been adapted to Hong Kong Building Department requirements and tested for wind loads of over 6.000 Pa. This is the cero I-s.

THERMAL INSULATION

cero offers optimum thermal insulation values, with U_w values of 0.8 W/m²K (in the passive house range) when using triple-glazed safety glass for example. cero is tested and certified.

BURGLAR RESISTANCE

cero has been tested and certified in line with the highest security standards, and equipment that meets anti-burglary protection classes RC2 and RC3 is available as an option. Connections to alarm systems, a lock monitoring system and notification systems such as broken glass sensors and position monitoring systems are all available as options.

MOTORISATION

The sliding elements can be fitted with a fully automated operating system including electro-mechanical locking and unlocking. A group control unit can be used to control the closing sequence in systems with multiple, interdependent, motor-driven panels. Thanks to this, up to six motors can be controlled within one system.

ACCESSORIES

To provide optimum shade for its large glass surfaces, cero offers a motor-driven sun-protection system with guide rails to fit the frame. Insect protection up to 1.30 m in width and 3 m in height can be integrated into the frame.

HANDLES

cero comes with a high-quality, brushed V4A stainless steel handle as standard to guarantee maximum protection against corrosion.

HEIGHT ADJUSTMENT

Two and three-track cero II systems can be fitted with an optional height adjustment mechanism above the top frame profile. This can be used to adjust the system height after installation.



CUSTOM OPTIONS

AVAILABLE FOR

COLOURS, HANDLES

AND MUCH MORE

MAXIMUM FLEXIBILITY FOR EVERY PROJECT

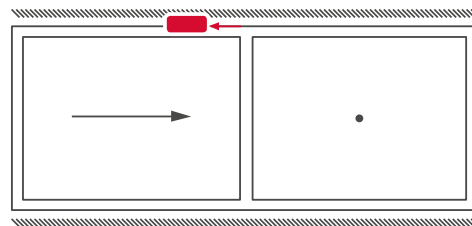
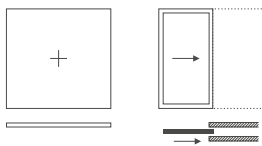
Opening system variants

Sliding to the left and/or to the right, straight or cornered, motorised or manual - cero offers numerous opening system variants to suit any project. Thanks to the ingenious engineering, the large glass elements can be opened with ease - and almost no noise.

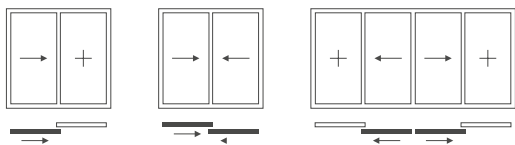


CONFIGURATION EXAMPLES

Track for one panel



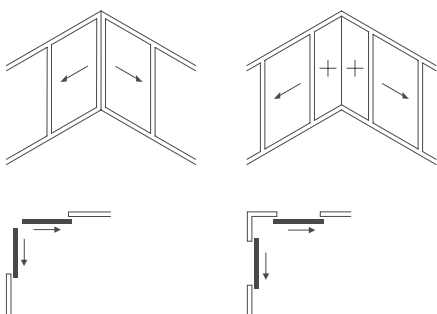
Track for two panels



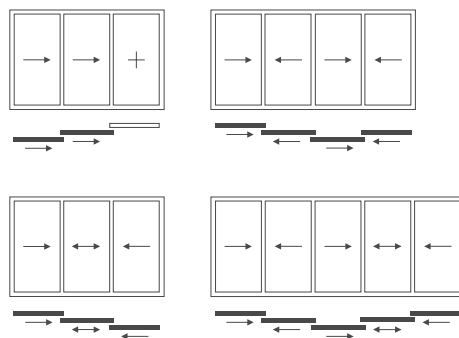
ELECTRIC DRIVE FOR SLIDING PANEL

Electric motor fitted above top frame profile; belt drive located between the top frame profile and the sliding panels. Each panel has a dedicated motor that can move a panel weight of up to 1,000 kg.

Corner solutions



Track for three panels



CERO I-s

Aluminium, non-insulated

In order to meet increased structural requirements - e.g. due to typhoons and hurricanes - we have developed a stronger profile variant for the cero sliding system. For the non-insulated cero variant, we use reinforced profiles with outstanding structural specifications. This new version has been developed according to Hong Kong Building Department requirements and was successfully tested in Hong Kong as a two-panel system with dimensions of W x H 4,000 m x 3,500 m and a panel weight of 600 kg per panel. The results of this test were as follows:

STRUCTURAL SAFETY TEST IN ACCORDANCE WITH ASTM E330 > 6,400 PA

Air infiltration in accordance with ASTM E283-04 > 300 Pa

Water penetration in accordance with ASTM E 331-00 > 770 Pa



VIDEO: FLOOR-TO-CEILING GLAZING
WITH UNDERSTATED PROFILES - NEW
PERSPECTIVES WITH CERO



CERO I / HARBOUR CITY, HONG KONG

CERO II

Aluminium, thermally insulated

The thermally insulated cero II system with double glazing is a great choice for buildings that need accessible entrances and exits and a flush floor track. The flush-mounted running tracks and guide rails are built into the system. The glass rebate ventilation guarantees controlled drainage.

CERO CAN BE

CONNECTED

TO EXISTING

ALARM SYSTEMS



CERO AT A GLANCE

Overview of all features and performance ratings





SL 60HK / MOUNT PAVILIA, HONG KONG

FOR A SEAMLESS
TRANSITION
TO THE *outdoors*

BI-FOLDING DOORS

MUCH MORE THAN A WINDOW

The Solarlux bi-folding door

The bi-folding door has been the beating heart of Solarlux right from the very beginning. Unlike traditional sliding doors, which can leave a large section of the opening covered by glass even when fully open, the individual elements of the bi-folding door gather up into a slender bundle of panels that can be stored on one side. This produces generous glass fronts that can be opened across almost 100 % of their area while still offering maximum protection when closed. All of our bi-folding doors are certified - but more than that, they are also subject to continuous testing by international test institutes.



GENEROUS OPENINGS

Bi-folding doors can be opened across almost their entire area, and even large elements can be moved with minimal force. They offer a sense of transparency, openness, light and airiness, thus making bright, modern rooms feel spacious in a way no other solution can match.



WIND LOADS

Solarlux's bi-folding doors effortlessly keep high wind loads at bay and can handle extremely demanding structural requirements. Depending on the project and system in question, steel inserts can be used in the profiles for extra stability - or additional posts that are built into the system and move with the door. This makes bi-folding doors a safe option for use in facades and high-rise buildings.



SECURITY

Solarlux is the only manufacturer with anti-burglary protection class RC2 certification for its numerous bi-folding door opening variants. It doesn't matter whether the variant you choose opens inwards or outwards - increased security in accordance with European standards is guaranteed. In addition to this, Solarlux also offers extra-strict security standards for all its opening system variants.



IMPERMEABILITY

Constant testing for impermeability to wind and driving rain make Solarlux bi-folding doors a modern alternative to the traditional patio door.



SL 60HK / MOUNT PAVILIA, HONG KONG

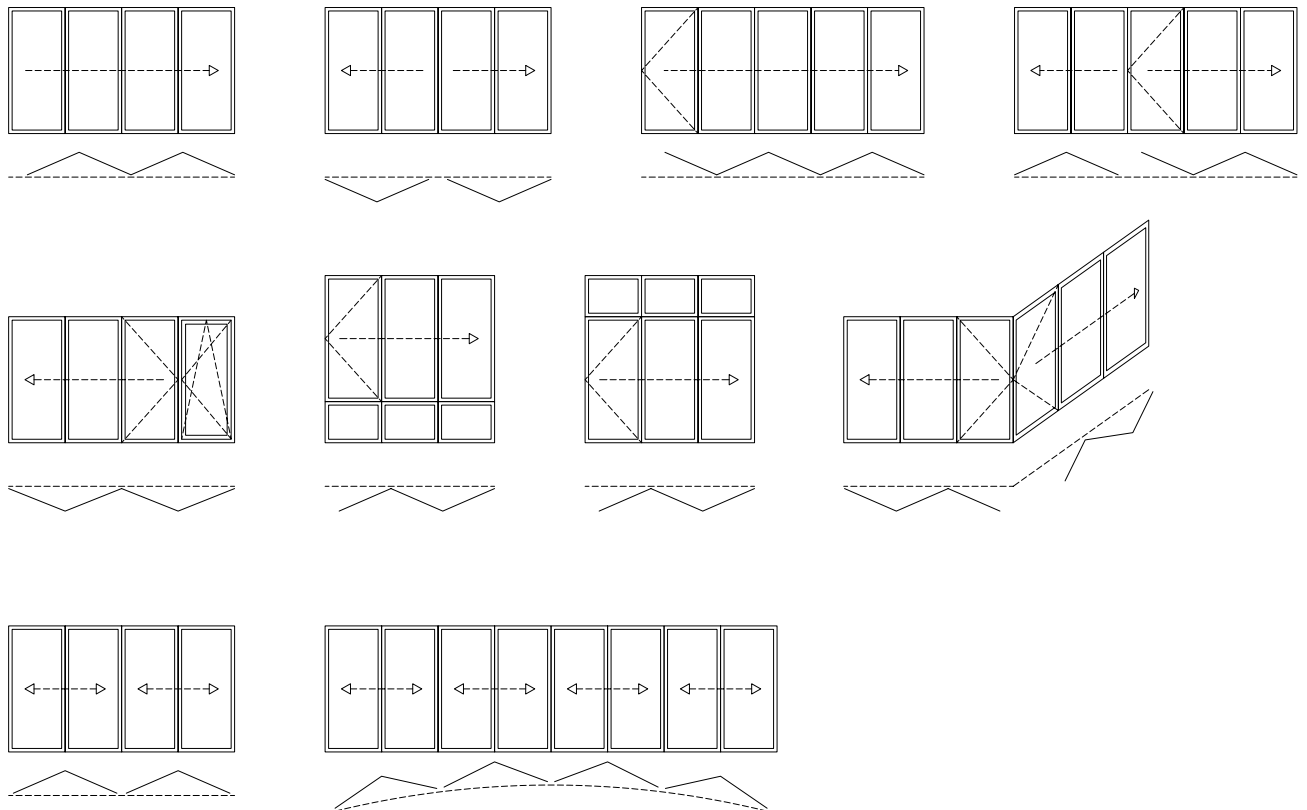
MAXIMUM FLEXIBILITY FOR EVERY PROJECT

Opening system variants

Inwards or outwards, folding to the left and/or to the right - Solarlux bi-folding doors offer numerous opening variants to suit any project. The individual glass elements can be opened or closed in just a few simple steps across their whole area. Thanks to the ingenious engineering, even very large glass elements can be opened with ease - and almost no noise. And of course, you can also integrate access doors, tilt & turn windows and fixed elements into your design - a wide selection of bespoke solutions.

**OPENING INWARDS OR
OUTWARDS, TO THE LEFT OR
TO THE RIGHT: SOLARLUX
OFFERS COUNTLESS OPENING
VARIANTS**

CONFIGURATION EXAMPLES



THE BI-FOLDING DOOR SYSTEMS

A variety of options to suit any requirement

Private or public building projects, commercial projects, sports facilities or swimming pool glazing – whatever you need for your project, our comprehensive range of bi-folding doors has the right solution for you. Whether you're looking for incredibly slender sight lines, high wind load resistance or something for a segmented floor plan, we can offer you the perfect bi-folding door system.

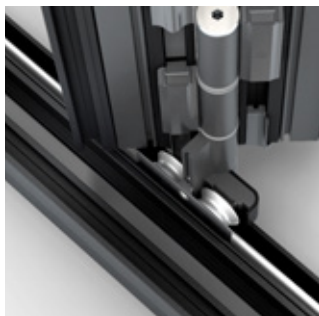
ECOLINE AND HIGHLINE

Aluminium, thermally insulated

INGENIOUS ENGINEERING WITH A SIGHT LINE OF JUST 99 mm

Despite their differences in overall depth (67 mm and 84 mm), our two thermally insulated bi-folding door systems, Ecoline and Highline, boast a slim sight line of 99 mm at the panel joint. This is thanks to the patented heart of the bi-folding door: the bionicTURTLE®, a multi-functional thermal break profile that combines a range of technical innovations. Its shape helps to keep profiles extremely slim – even when using large and heavy panels. The two systems are more than merely functional – they also boast an impressive design, which is reflected in the international design awards they have won.





1

RUNNER ASSEMBLY

- Stainless steel runner assembly with double-layered groove bearings
- Smooth and quiet operation
- Optimum load transfer
- Extremely low-maintenance and non-wearing



2

LOCKING

- 24 mm upward and downward stroke in the frame
- Optional link to security system possible
- Concealed cable routing
- RC2 version available



3

"COMFORT SNAP" PANEL CATCHES

- Locks open swing panel in place against the next folding panel
- Functional catch allows the panels to be opened and closed easily



4

"EASY CLEAN" REMOVABLE HINGE PIN

- Easy cleaning even with high floor-to-ceiling dimensions
- New integral locking technology with error device
- Captive hinge pin which cannot drop out accidentally



5

ADJUSTMENT PROFILE

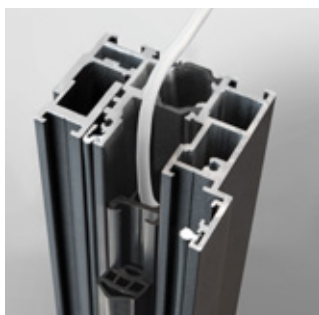
- Simple adjustment for panel tolerances
- Adjustment of panels from one single profile
- No break in sealing



6

3S TRACK GUARD

- High quality clip-on aluminium track guard
- Integrated locking channel cover
- Prevents ingress of dirt



7

FRAME COVER

- Tasteful, flush cover for subframe fixing screw heads
- Concealed cable routing cover possible



8

"TWINX" CONCEALED PANEL CENTRING MECHANISM

- Elegant slimline panel design throughout, with even joints
- No break in sealing face
- Constant sealing pressure



SL 60HK / MOUNT PAVILIA, HONG KONG

THE PERFECT *solution* FOR ANY REQUIREMENT

REFERENCE PROJECTS

HARMONY

Residential development

YEAR

2017

OWNER

SEA Group

ARCHITECT

Lu tang Lai Architects Limited

PLACE

44 Stubbs Road, Hong Kong

SYSTEM

SL 60 bi-folding glass door (22 sets)



THE PAVILIA HILL

High-rise residential development



YEAR

2017

OWNER

New World Development
Company Limited

ARCHITECT

P&T Architects and
Engineers Limited

PLACE

18A, Tin Hau Temple Road
North Point, Hong Kong

SYSTEM

SL 60 bi-folding glass door
(360 sets)



MOUNT PAVILIA

Low-rise residential development



YEAR

2017

OWNER

New World Development
Company Limited

ARCHITECT

Wong Tung & Partners Limited

PLACE

663 Clear Water Bay Road, Sai Kung
New Territories

SYSTEM

SL 60 bi-folding glass door (345 sets)



ONE HOMANTIN

High-rise residential development





YEAR

2018

OWNER

Wheelock Properties
Hong Kong Limited

ARCHITECT

P&T Architects and
Engineers Limited

PLACE

1 Sheung Foo Street
Ho Man Tin, Kowloon

SYSTEM

SL 60 bi-folding glass door
(568 sets)

SERENITY POINT

Detached house



YEAR

2018

OWNER

Chinachem Group

ARCHITECT

Dennis Lau & Ng Chun Man Architects &
Engineers (HK) Limited

PLACE

2 Serenity Path, Sai Kung
New Territories

SYSTEM

cero sliding glass door
(4 sets)



OCEAN TERMINAL EXTENSION

Commercial development



YEAR

2017

OWNER

Harbour City Estates Limited

ARCHITECT

Foster and Partners

PLACE

Harbour City, Tsim Sha Tsui, Kowloon

SYSTEM

cero sliding glass door
(29 sets)

